



MONTHLY MEMBERSHIP PROGRESS REPORT

District 105 C

Results as of: 6/30/2017

GMT: OPEN

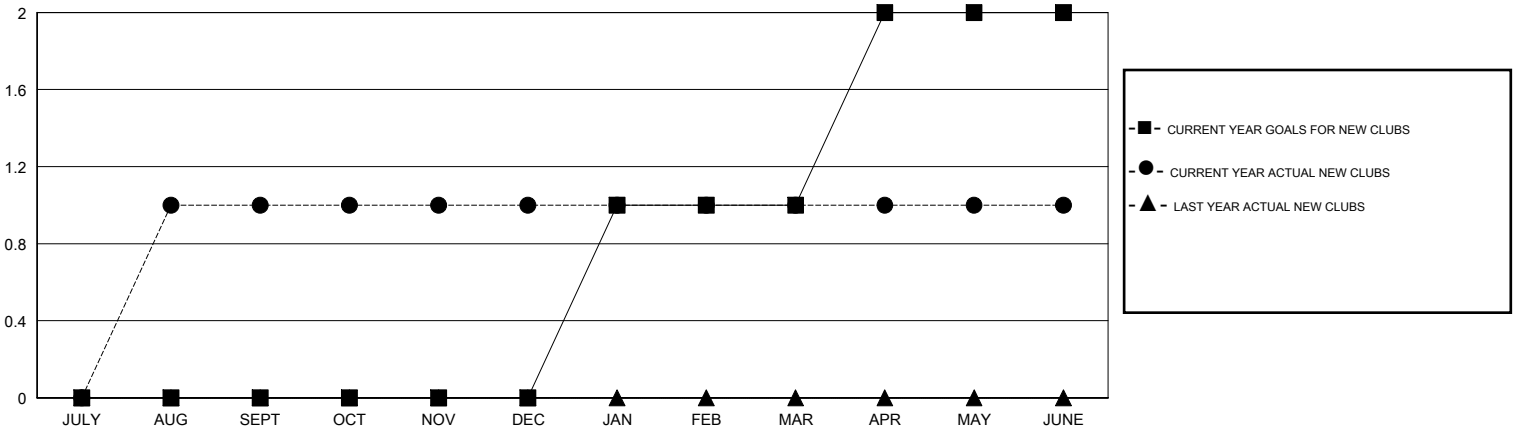
LOCATION ENGLAND

GMT CA

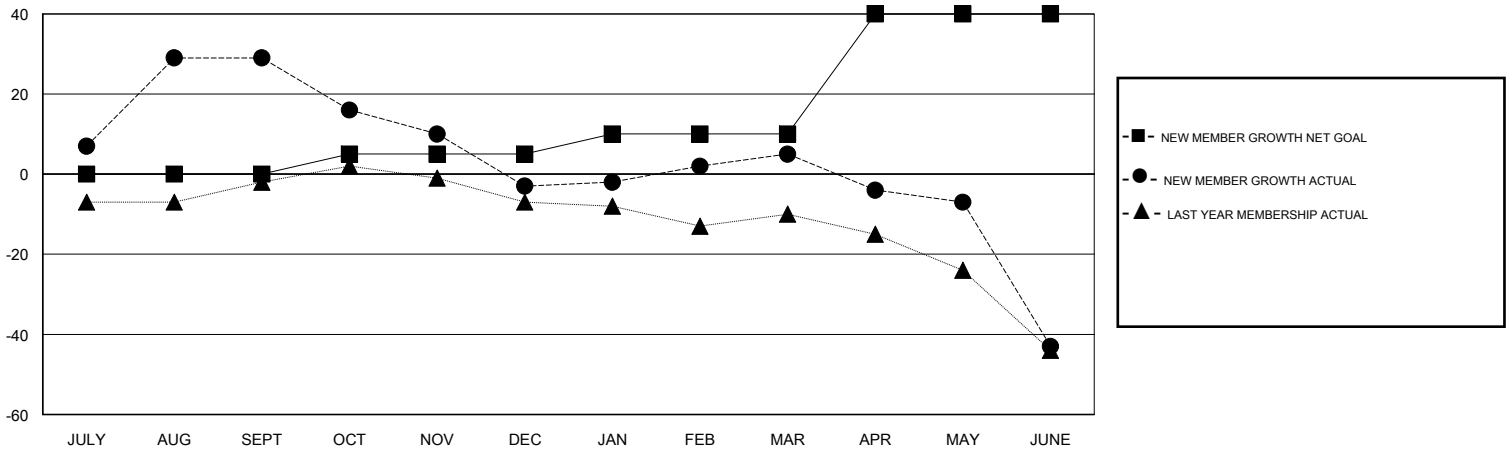
Clubs			
RESULTS FOR 2016-2017			
QUARTER	NEW CLUB GOAL	NEW CLUBS	DROPPED CLUBS
JULY/AUG/SEPT	0	1	0
OCT/NOV/DEC	0	0	0
JAN/FEB/MAR	1	0	0
APR/MAY/JUNE	1	0	1

Members			
RESULTS FOR 2016-2017			
QUARTER	NEW MEMBER GROWTH NET GOAL (not reinstated or transfers)	NEW MEMBER GROWTH ACTUAL (not reinstated or transfers)	DROPPED MEMBERS ACTUAL (including transfers)
JULY/AUG/SEPT	0	52	23
OCT/NOV/DEC	5	7	39
JAN/FEB/MAR	5	28	20
APR/MAY/JUNE	30	16	64

GOALS AND ACTUAL NEW CLUBS CUMULATIVE



GOALS AND ACTUAL MEMBERS CUMULATIVE



DROPPED CLUBS: 1	
DROPPED MEMBERS	
DECEASED	10
CLUB CANCELLED	15
OTHER	121
TOTAL	146

39 CLUBS OF 52 ADDED 1 OR MORE NEW MEMBERS

[CLICK HERE FOR CUMULATIVE MEMBERSHIP DATA](#)

<u>GENDER DISTRIBUTION</u>	
MALE	596 (68.11%)
FEMALE	279 (31.89%)
TOTAL FAMILY UNIT MEMBERS	109
FAMILY MEMBERS PAYING HALF DUES	56